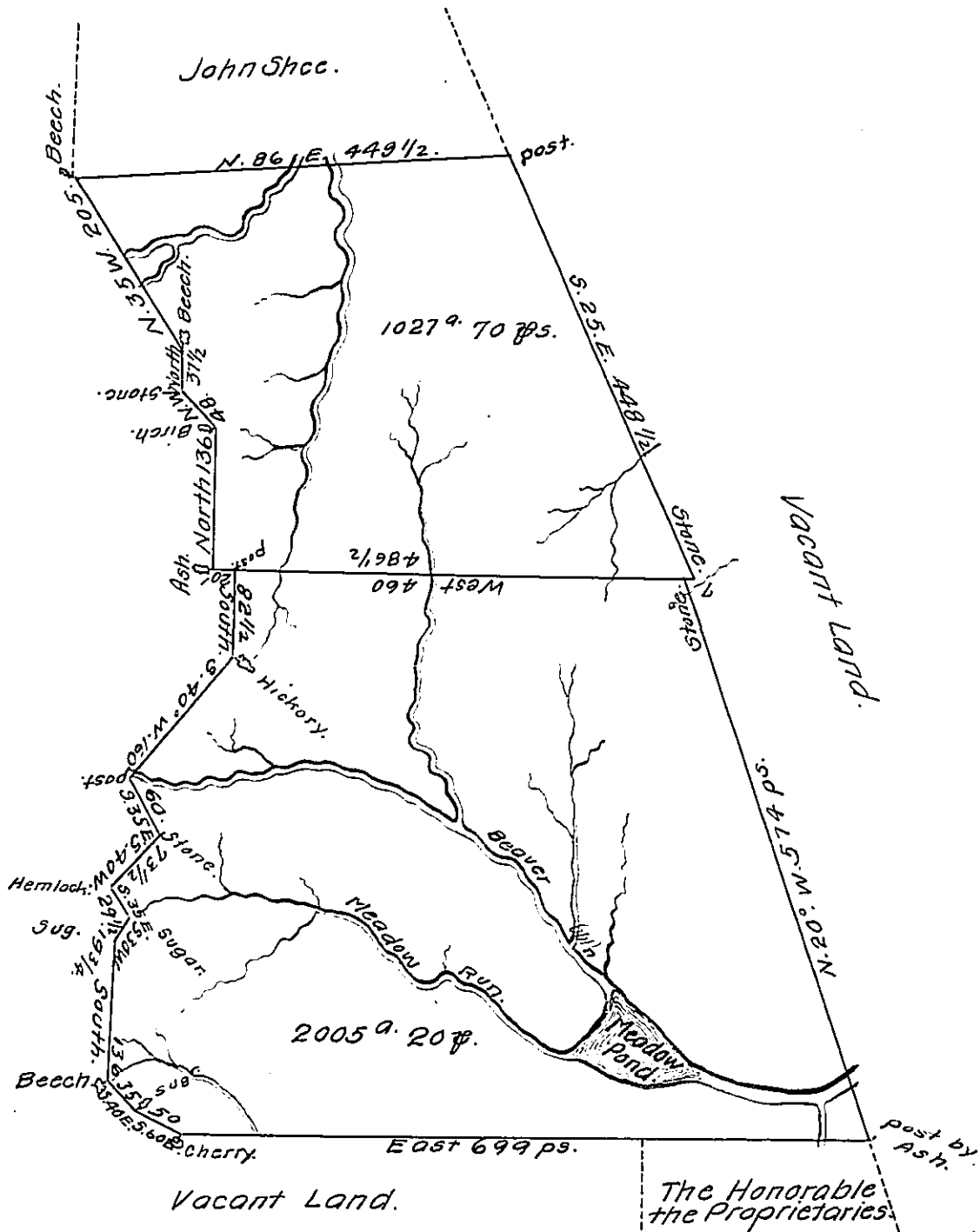


*Moosick Mountain being the Ridge that Divides
The Waters of Delaware from Susquehanna.*



By Virtue of a Warrant dated the 16th of December, 1763 and Surveyed the 2^d, 3^d & 4th of June 1776 to the Honorable the Proprietaries (in part of their tenth.) the two above Described tract of Land situate on the West branches of Lechawaxsin Creek on the East side of the Moosick Mountain in Northampton County Containing in the two tracts Three thousand thirty two Acres ninety perches and the allowance of six Cent & Co.

To John Lukens, Esquire,
Surveyor General.

Geo. Palmer, D.S.

IN TESTIMONY that the above is a copy of the original remaining on file in the Department of Internal Affairs of Pennsylvania, made conformably to an Act of Assembly approved the 16th day of February, 1833, I have hereunto set my Hand and caused the Seal of said Department to be affixed at Harrisburg, this eleventh day of May, 1910.

Henry Horvath
Secretary of Internal Affairs.